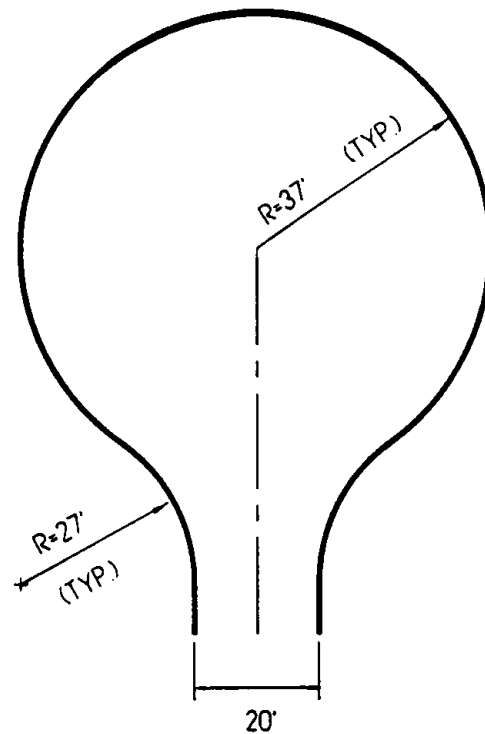




This Standard has been developed pursuant to Chapter 5 of the California Fire Code and Chapter 4 of the International Wildland Urban Interface Code, both as adopted by ordinance by the Southern Marin Fire District. The purpose of the standard is to provide specific criteria and dimensions in designing fire apparatus turn around for commercial and residential developments.

Residential Driveway Standard

Scale 1" = 30'



Do Not Photocopy

Scaled Engineered Template