



SOUTHERN MARIN EMERGENCY NOTIFICATION NETWORK WITH TCSD 2023-2024

SOUTHERN MARIN FIRE PROTECTION DISTRICT

PRESENTED BY: MARSHALL NAU

415-847-3903 MNAU@SMFD.ORG



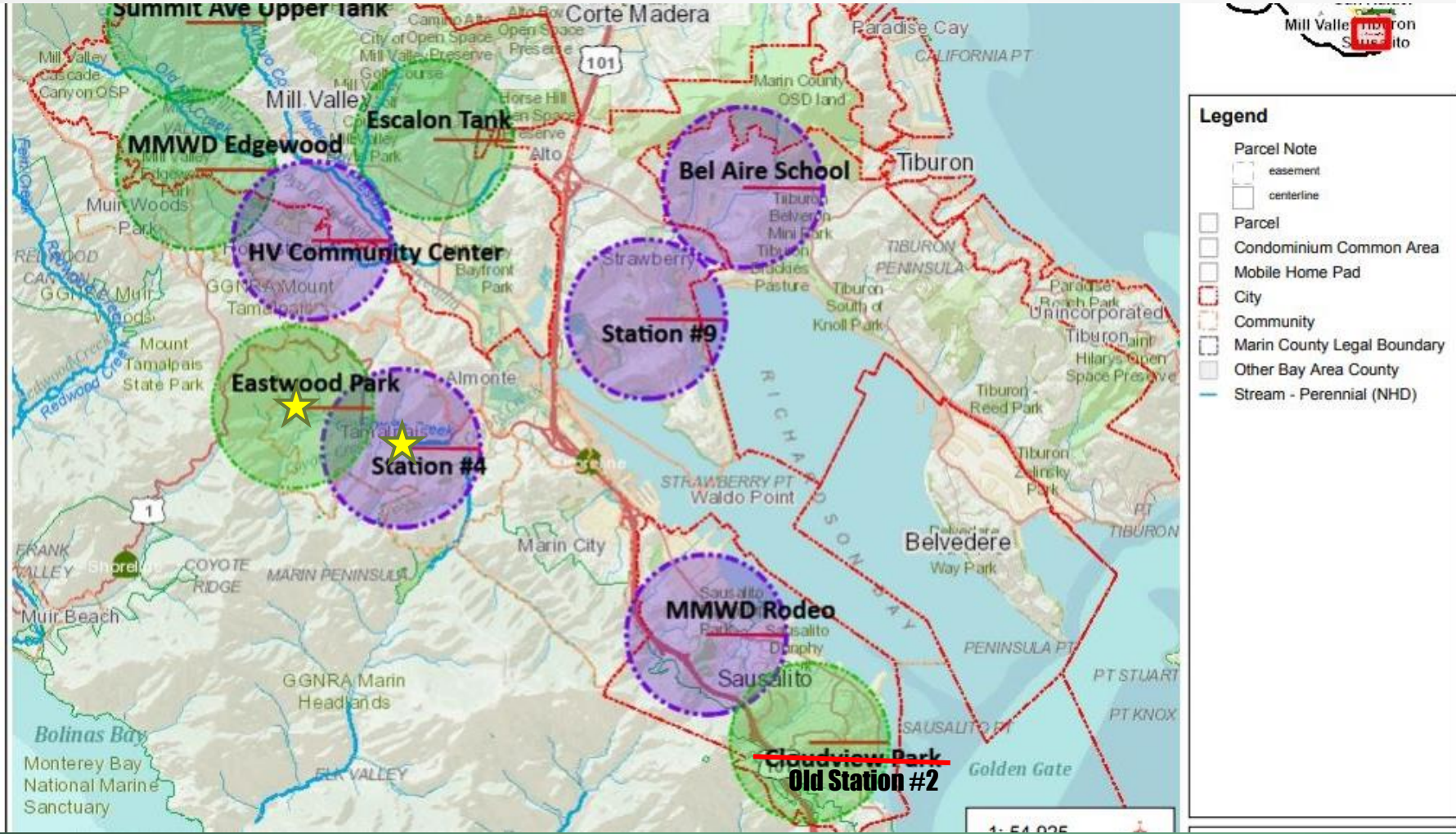


- **MULTI AGENCY OUTDOOR NOTIFICATION NETWORK – LAW/FIRE/OES**
- **SIRENS & VOICE MESSAGING OPTIONS – TIME SENSITIVE MESSAGING**
- **FUTURE EXPANSION WITH ZONE HAVEN PLATFORM – ALL GENASYS**





CURRENT SITE SELECTION:



- **Currently Tam Valley has on at SMFD Station #4**
- **Replaced an old siren**
- **Sound mapping shows the need**

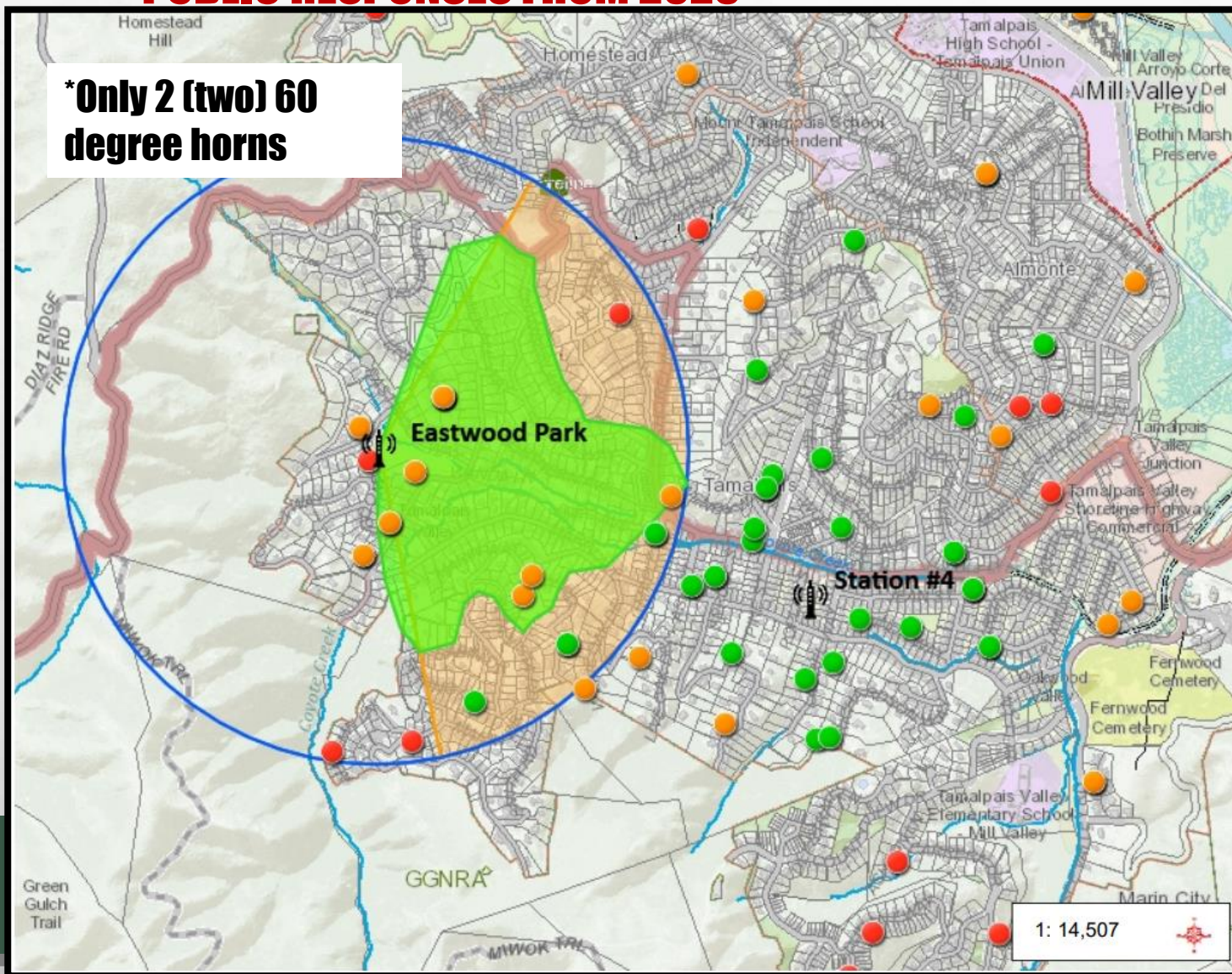
EXAMPLE SOUND RANGE:

PUBLIC RESPONSES FROM 2023

BETTER TOGETHER



SOUTHERN MARIN FIRE PROTECTION DISTRICT
MILL VALLEY FIRE DEPARTMENT



- **Minimal overlap with the Fire Station #4 site**

- **No current quality coverage**

- **Provides targeted notification to community**

Projection from Eastwood Park

POLE MOUNTING OPTION:

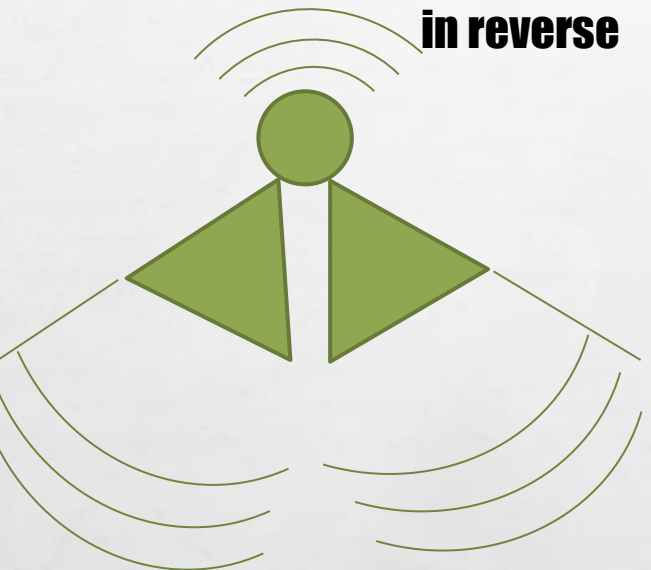
INSTALLED NEAR THE TOP OF A POLE WITH DIRECTIONAL SIRENS.



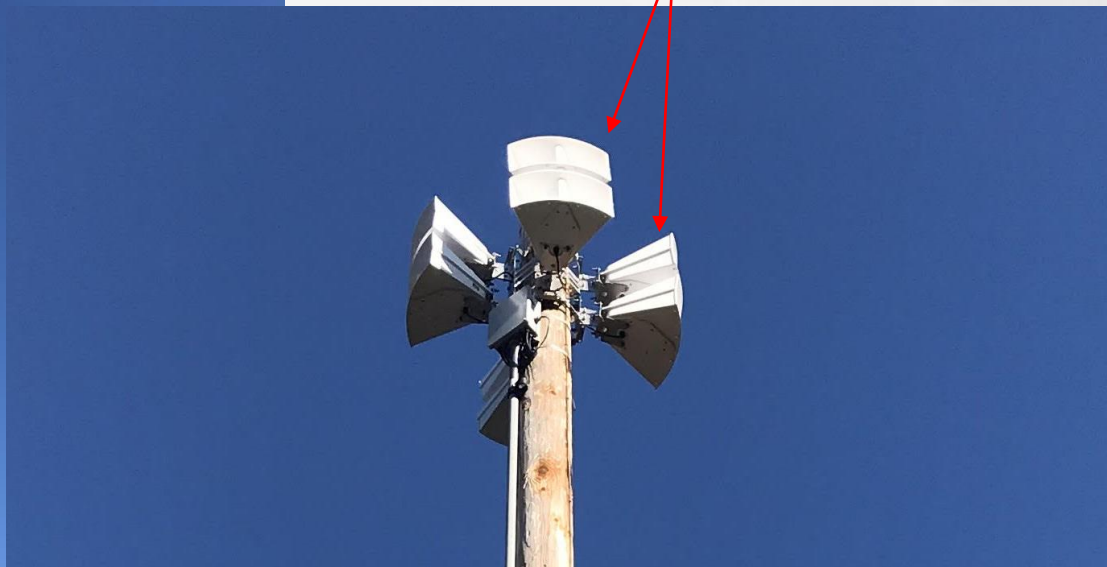
HORN DEGREE OPTIONS:

INSTALLED NEAR THE TOP OF A POLE WITH DIRECTIONAL SIRENS.

Ambient sound
in reverse



Only 120 degrees of coverage
is needed at the park



2 stacks of horns,
for 60 degree coverage



EXAMPLE SITES:



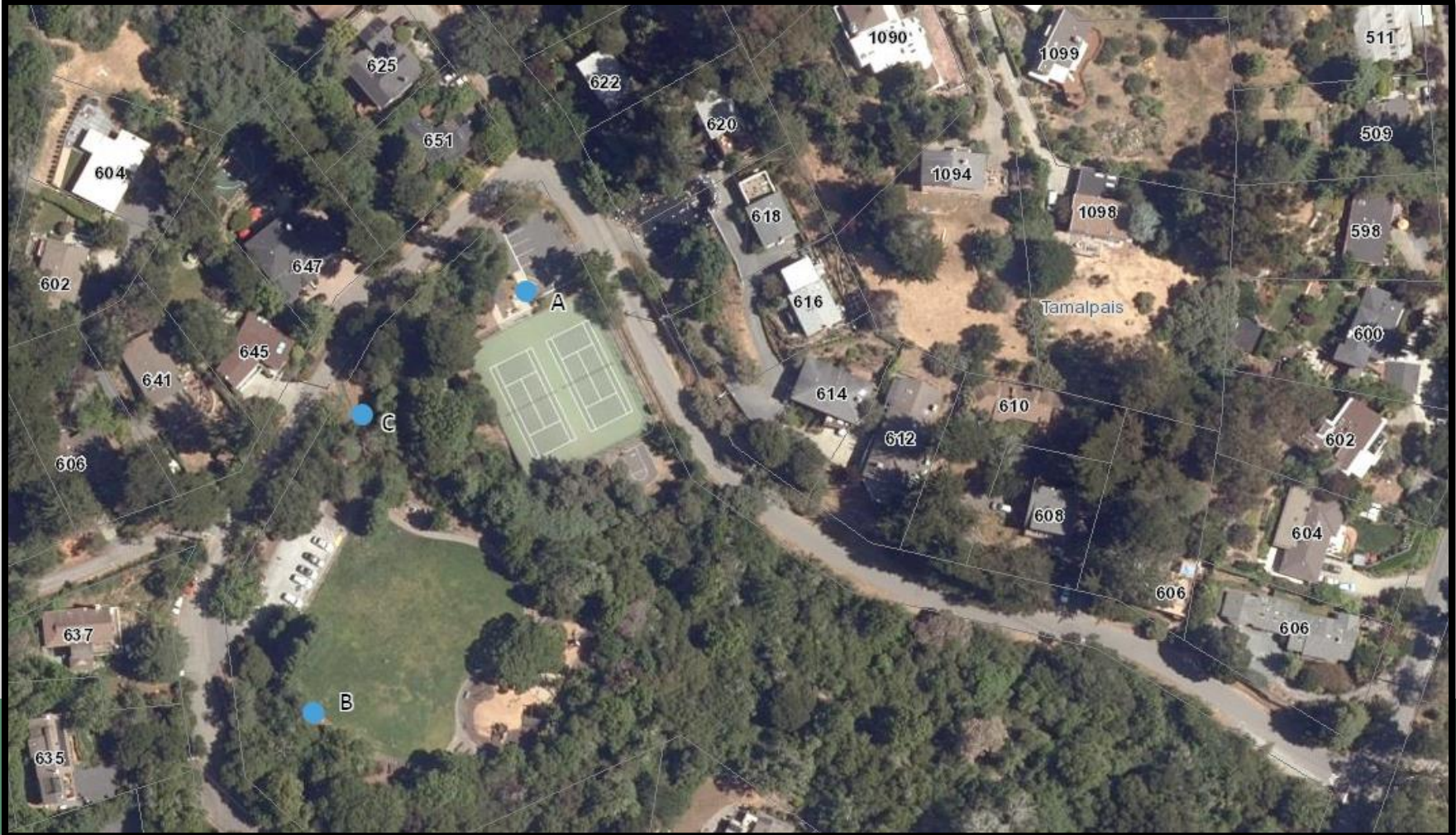
EXAMPLE SITES:



EASTWOOD PARK SITE:



EASTWOOD PARK SITE MAP:



EXAMPLE INSTALLATION

SITE A:

- **Emergency vehicle access**

Electrical access
(Solar exposure)



EXAMPLE INSTALLATION

SITE B:

- **Help to maintain vegetation that could threaten the park and siren**

Least traveled area of the park.



EXAMPLE INSTALLATION SITE C:

- **Emergency vehicle access**
- **Electrical access**
(Solar exposure)



LRAD HISTORY

TIMELINE:



- **2019 Fire presentations to City Councils on lessons learned from the 2017 Tubbs Fire.**
- **2020 Southern Marin Fire District (SMFD) released the WUI Risk & Hazard Assessment including LRAD.**
- **2020-2021 SMFD conducted “Livingroom Meetings” via Zoom with TCSD neighborhoods regarding evacuations and LRAD sites began to work through planning and environmental review.**
- **2021 LRAD projects were approved through Marin Wildfire Prevention Authority (MWPA) and began installation. Finished environmental review & exemption process and filed with County Clerk.**
- **2021-2022 SMFD launched a public outreach campaign called “Did You Hear It?” alongside regular Evacuation drills with Sausalito PD regarding current and future emergency notification.**
- **2022-2025 MWPA plans to expand the LRAD network to include additional future sites to the other areas within SMFD, including coverage near Marin Dr. and Marin View.**