



Southern Marin Fire Protection District

28 Liberty Ship Way Suite 2800

Sausalito, CA 94965

Phone 415 388-8182

www.smfd.org

COURTESY NOTICE

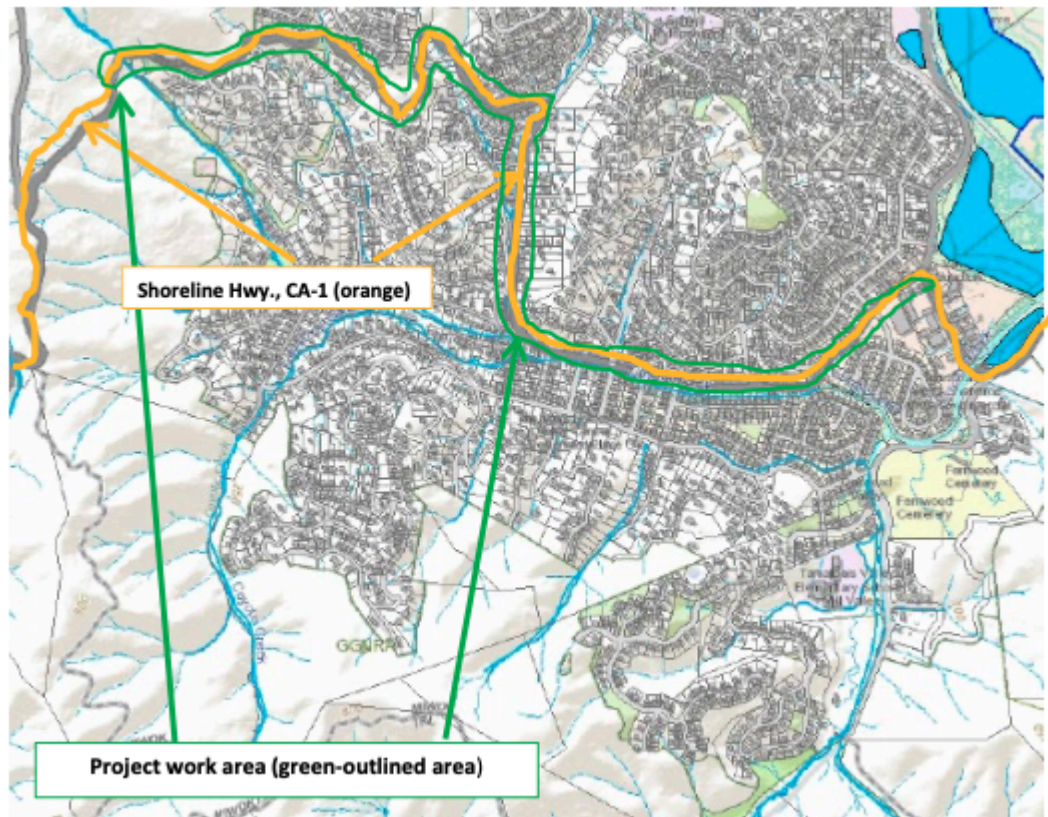
January 09, 2024

Dear Residents,

The Southern Marin Fire Protection District is establishing a shaded fuel break by means of a forest health restoration project in Tamalpais Valley. This project will reduce flammable and encroaching vegetation along Shoreline Highway, our main evacuation route in Tamalpais Valley. The footprint of this project will start near the Junction of Shoreline and Almonte and will extend to Southern Marin Fire District's jurisdictional boundary at Erica Road.

The scope of the project is to remove non-native vegetation such as broom, eucalyptus tree debris, and smaller eucalyptus trees and other non-native vegetation within this described zone above. Additional work will also include limbing up trees, thinning out brush and vines, and removing dead and down vegetation that encroaches Shoreline Highway.

The purpose of the Shoreline Highway project is to establish and maintain a defensible space zone along the perimeter of the Shoreline Highway in the high fire severity zones. These communities are located along steep slopes, where a wildfire could rapidly escalate in certain fire conditions. By reducing encroaching vegetation and promoting the growth of native plant species, the project would extend evacuation times for the community, slow fire intensity, and provide firefighters better access to the fire's edge if a wildfire were to occur.



No action is required from you at this time. Work will be starting in the Spring of 2024 – Additional information will be available at smfd.org. This project will go a long way to providing a higher level of safety to this area and for a healthier forest. Please contact the Prevention Division at Southern Marin Fire Protection District if you have any questions at (415) 380-1120.